

# **ABBYY FlexiCapture 8.0 Professional System Administrator's Guide**

© 2009 ABBYY. All rights reserved.

ABBYY, the ABBYY logo, FlexiCapture, FlexiLayout, FormReader, FineReader are either registered trademarks or trademarks of ABBYY Software Ltd.

© 1987-2003 Adobe Systems Incorporated. All rights reserved. Adobe® PDF Library licensed from Adobe Systems Incorporated.

Adobe, Acrobat, the Acrobat logo, the Adobe logo, the Adobe PDF logo and Adobe PDF Library are either registered trademarks or trademarks of Adobe Systems Incorporated in the United States and/or other countries.

ISIS® scanning interface © 2005, Captiva Software Corporation. All rights reserved. ISIS and PixTools are either registered trademarks or trademarks of Captiva Software Corporation in the United States and/or other countries.

JScript is a registered trademark of Microsoft Corporation in the United States and/or other countries.

Unicode is a trademark of Unicode, Inc.

JasPer Software

© 1999-2000, Image Power, Inc. and the University of British Columbia, Canada.

© 2001-2006 Michael David Adams.

All rights reserved.

All other trademarks are the property of their respective owners.

# Table of Contents

<b>Local Installation .....</b>	<b>4</b>
<b>Network Installation .....</b>	<b>5</b>
General.....	5
Creating an administrative installation point.....	5
<i>Administrative installation folder requirements.....</i>	<i>5</i>
<i>License database folder requirements.....</i>	<i>5</i>
<i>License administrator station requirements.....</i>	<i>5</i>
<i>Workstation requirements.....</i>	<i>5</i>
<b>Deploying ABBYY FlexiCapture 8.0 Professional on workstations.....</b>	<b>8</b>
Installing the program in interactive mode.....	8
Installing the program via the command line.....	9
<i>Advertise installation.....</i>	<i>9</i>
<i>Silent installation.....</i>	<i>9</i>
<i>Additional command line options for silent installation .....</i>	<i>9</i>
<i>Removing ABBYY FlexiCapture in silent mode .....</i>	<i>10</i>
<b>Installing the program using Active Directory .....</b>	<b>11</b>
<i>Example: Deploying ABBYY FlexiCapture 8.0 using Active Directory .....</i>	<i>11</i>
<b>Installing the program using SMS.....</b>	<b>15</b>
<i>Example: Deploying ABBYY FlexiCapture 8.0 using Microsoft SMS.....</i>	<i>15</i>
<b>Managing licenses .....</b>	<b>19</b>
General.....	19
ABBYY FlexiCapture 8.0 License Manager .....	19
License types.....	19
License statuses.....	20
<i>License statuses.....</i>	<i>20</i>
License properties.....	20
Buttons in the main window .....	20
Activating a license .....	21
<i>How activation is carried out.....</i>	<i>21</i>
<b>Group work in a LAN .....</b>	<b>23</b>
Working on the same project on several workstations.....	23
<b>Technical support.....</b>	<b>24</b>

# Local Installation

Close all other applications (e.g. Microsoft Outlook or Microsoft Word) prior to installing ABBYY FlexiCapture 8.0 Professional.

To install ABBYY FlexiCapture 8.0 Professional:

1. Place the ABBYY FlexiCapture 8.0 Professional CD-ROM into the CD-ROM drive.
2. In the Autorun menu, select **Local installation** and follow the instructions for the setup program. (If Autorun is disabled on your computer, double-click the setup.exe file located on the CD-ROM).
3. Select a setup language (either English or Russian). The setup program will compare the locale of your system and the selected language. If the languages are incompatible, a warning message is displayed.
4. Next, the setup program checks the version of your operating system and the availability of the administrative permissions. If the version of the operating system is not supported by the program or you do not have the administrative permissions, a warning message is displayed and the setup program is terminated.
5. If all the checks have been successfully passed, the end-user license agreement will be displayed. Read the license agreement carefully and if you agree with the terms of the agreement, select the corresponding option and click **Next**.
6. A dialog box will open in which to enter some information about yourself. Enter the required information and continue with the installation.
7. In the next dialog box that opens, select one of the available installation modes:
  - **Full** – The program will be installed in its entirety. You will be able to switch between administrator and operator modes and use FormDesigner 8.0 and FlexiLayout Studio 8.0.
  - **Operator Station** – Only the Operator Station will be installed. (The Administrator Station, FormDesigner 8.0 and FlexiLayout Studio 8.0 will not be installed.)
8. Next, select a destination folder. By default, the program is installed under: **%:\Program Files\ABBYY FlexiCapture 8.0 Professional**. If there is not enough space on the selected hard disk, a window is displayed showing your hard disks, the available free space, and the space required by the installation. Select a disk with sufficient free space and continue with the installation.
9. The program files will be copied onto your computer. Once the installation is finished, the setup program will display a message saying that the application has been successfully installed.
10. **FlexiCapture 8.0 Professional License Manager** will be launched automatically so that you can activate your copy of the application. Enter your serial number and activate the application. For more information see *Managing licenses*.

# Network Installation

## General

ABBYY FlexiCapture 8.0 can be installed and used on a network.

To install ABBYY FlexiCapture 8.0 on a network, you must:

1. Create an administrative installation point on the server
2. Deploy the program on the LAN workstations using one of the methods below
  - manually in interactive mode
  - from the command line
  - using Active Directory
  - using Microsoft Systems Management Server (SMS)
  - using Task Scheduler

The automated installation methods give you speed and flexibility when installing ABBYY FlexiCapture 8.0 Professional on a local area network, as you do not have to install the program manually on each individual workstation.

## Creating an administrative installation point

An administrative installation point can be created from any computer running under Microsoft Windows 2000 SP 3 (or later). When you create an administrative installation point, the program files from the installation CD-ROM are copied into an administrative installation folder on the network server. At the same time, ABBYY FlexiCapture 8.0 License Manager is installed and a license database is created. The License Manager is an application for managing ABBYY FlexiCapture licenses. The License Manager is installed into a local folder on the hard disk of the computer from which you create the administrative installation point (e.g. **F:\Program Files\ABBYY FlexiCapture 8.0 License Manager**). This computer will become a **license administrator station**.

**Note:** It is assumed by default that ABBYY FlexiCapture 8.0 users may not be authenticated in the domain or they may be working in a workgroup. For this reason, the FlexiCapture.ini files on the license server and on the workstations contain the following key:

**[Protection]**

**RPCSecurityLevel=none**

If you want only the users who are authenticated in the license server domain to use ABBYY FlexiCapture 8.0, either remove the above key from the FlexiCapture.ini files or change it to

**[Protection]**

**RPCSecurityLevel=check**

For the changes to take effect, restart the service FlexiCapture 8.0 Professional License Server on the license server.

**Note:** The servers (**\\MyFileServer**) on which you create administrative installation points and the license database must be file servers running under any operating system that supports long names (e.g. Microsoft Windows, Unix, Mac OS, Novell Netware).

## Administrative installation folder requirements

1. 500 MB free hard-disk space
2. Read access to the administrative installation folder (e.g. **\\MyFileServer\Programs Distrib\ABBYY FlexiCapture 8.0**) for all users on whose computers ABBYY FlexiCapture is to be installed.

When using Active Directory® to deploy ABBYY FlexiCapture 8.0, the Domain Computers accounts must have read permissions for the administrative installation folder.

## License database folder requirements

1. 10 MB free hard-disk space to create license files and accounts
2. ABBYY FlexiCapture 8.0 users must be authenticated in the domain where the license server is installed.
3. The number of connections supported by the server on which the administrative installation point will be created must be at least equal to the total number of potential users of the program.

## License administrator station requirements

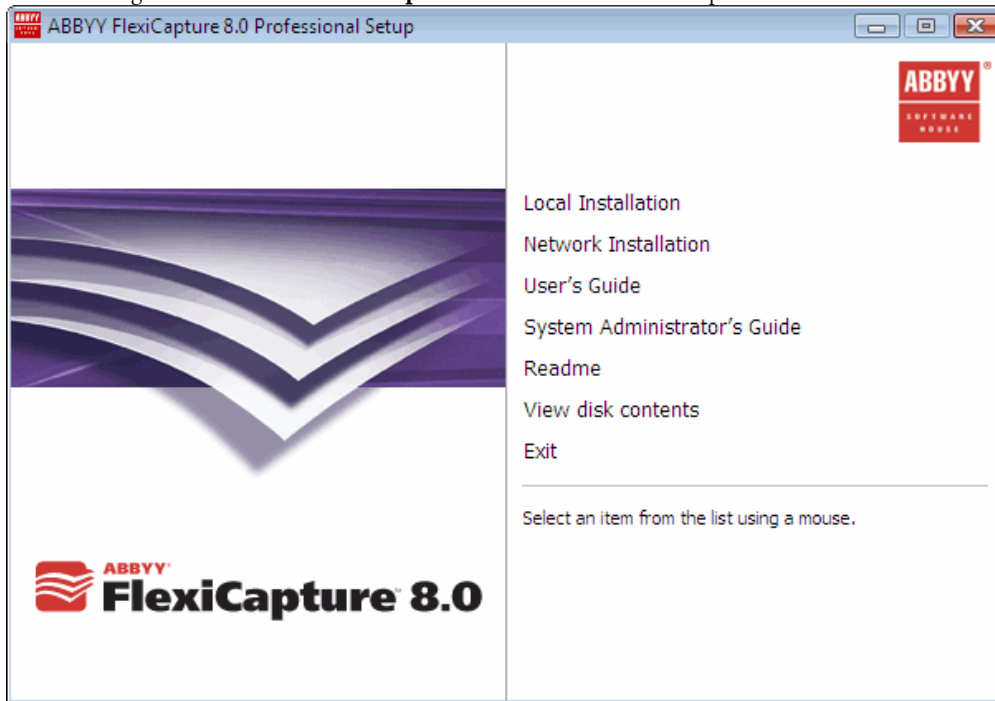
1. PC running under Microsoft® Windows® Server 2003, Windows® XP SP2, Windows® 2000 SP3, Windows Vista (to work with localized interfaces, the operating system must support the corresponding language)
2. 128 MB RAM
3. 10 MB free hard-disk space

## Workstation requirements

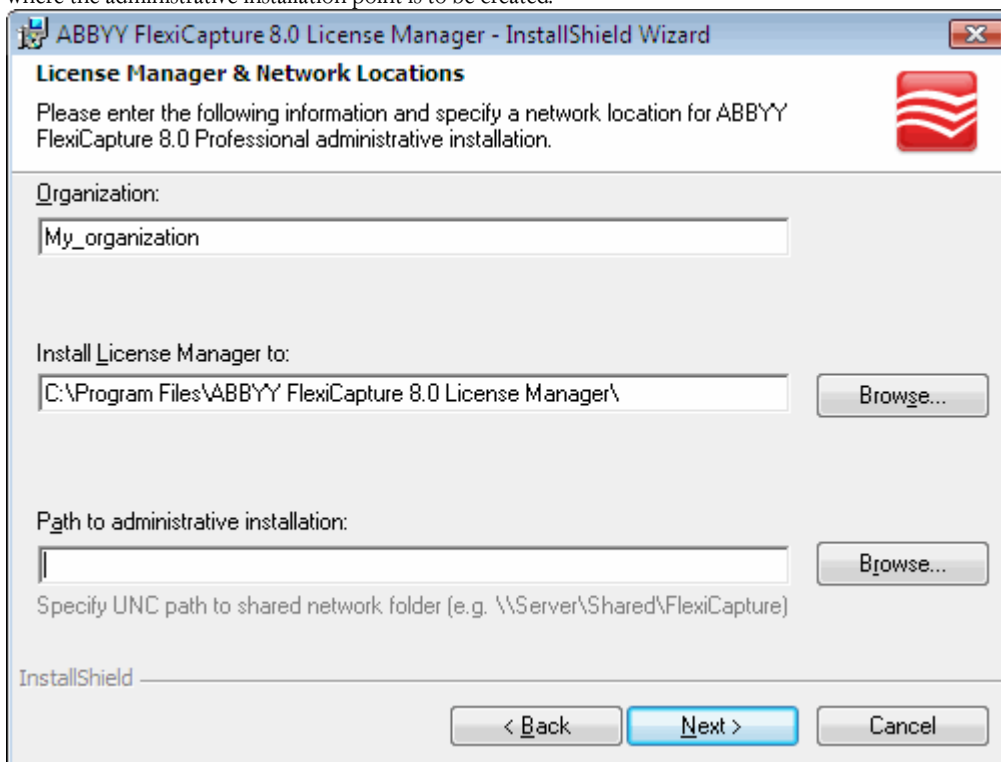
1. PC with 500 MHz or greater Intel® Pentium®/Celeron®/Xeon™, AMD K6/Athlon™/Duron™/Sempron™ or compatible processor
2. Microsoft® Windows® Server 2003, Windows® XP SP2, Windows® 2000 SP3, Windows Vista (to work with localized interfaces, the operating system must support the corresponding language)

3. 256 MB RAM; in multiprocessor systems, an additional 16 MB RAM is required for each additional processor; 1 GB RAM recommended
4. 450 MB free hard-disk space for typical installation; 1 GB free hard-disk space for program operation
5. 100% TWAIN-compatible or ISIS-compatible scanner, digital camera or fax modem
6. Video card and monitor supporting min. resolution of 800x600
7. Keyboard, mouse or other pointing device
8. USB port if hardware protection key is to be used

To start creating an administrative installation point, select **Network Installation/ABBYY FlexiCapture 8.0 Professional** in the autorun dialog box or run the **AdminSetup.exe** file on the ABBYY FlexiCapture 8.0 Professional CD-ROM.



The program will ask you to provide the path of the folder where the License Manager is to be installed and the path to the folder where the administrative installation point is to be created.

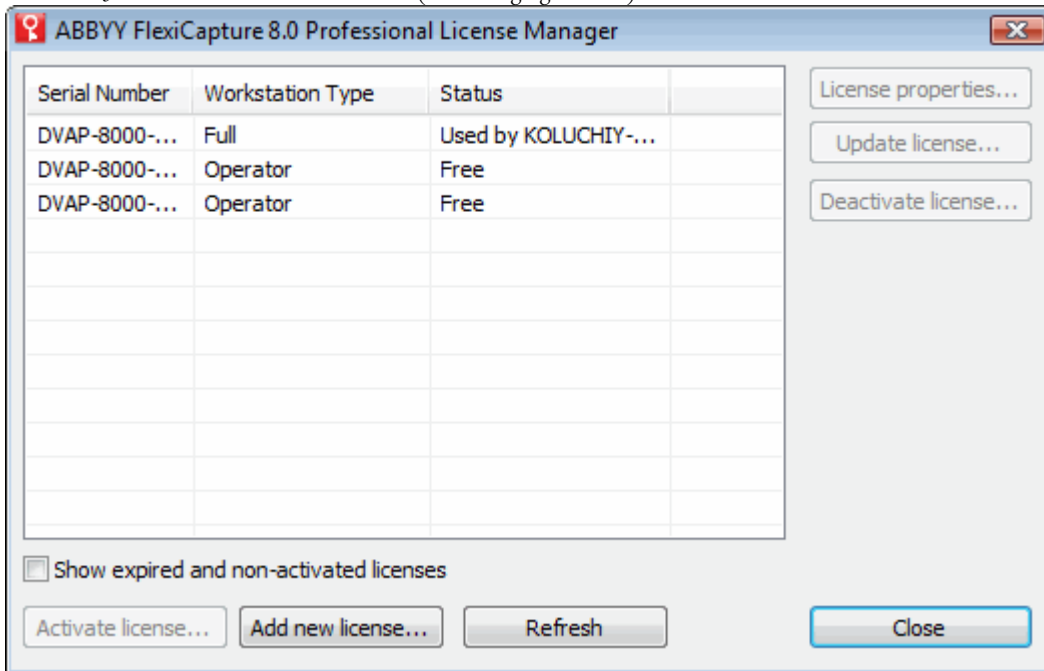


**Important!** If you remove the License Manager utility, the administrative installation pint will also be removed.

**Note:** It is recommended that you place the license database and the administrative installation point into different folders, as they require different access permissions. This will make the administrative installation point more secure.

Once the administrative installation point is created:

1. Launch the License Manager (Start\Programs\ABBYY FlexiCapture 8.0 Administrative Tools\ ABBYY FlexiCapture 8.0 License Manager).
2. Enter all the available licenses (see Managing licenses).
3. Activate all the licenses (see Managing licenses).



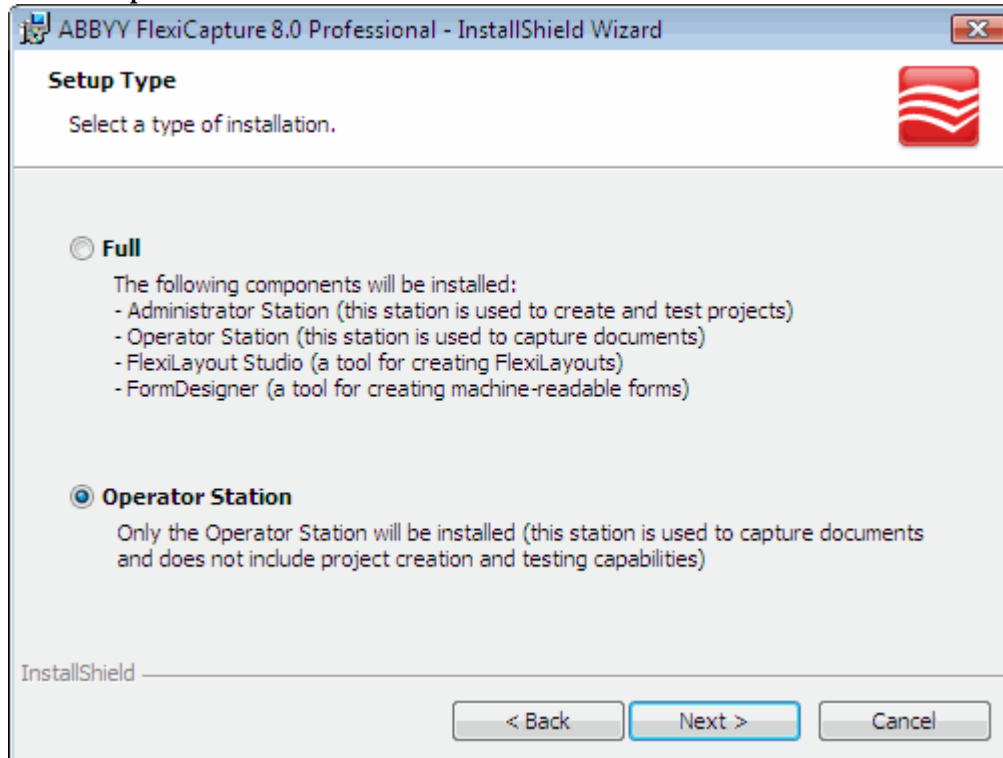
The administrative installation point has been created and the program can now be deployed on the workstations.

**Important!** Do not move the administrative installation folder.

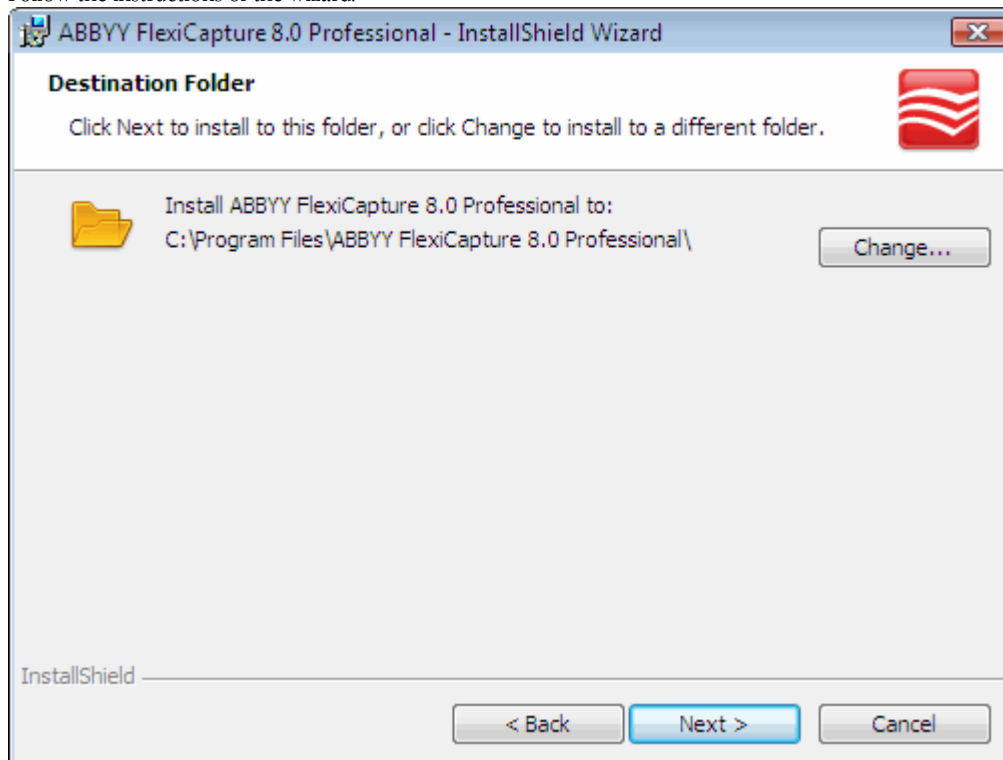
# Deploying ABBYY FlexiCapture 8.0 Professional on workstations

## Installing the program in interactive mode

Run the **setup.exe** file located in the administrative installation folder.



Follow the instructions of the wizard.





## Installing the program via the command line

Run the **setup.exe** file located in the administrative installation folder using the command line options described below.

### Advertise installation

For advertise installation, type

**Setup.exe /j**

The program icon will appear in the **Start** menu of the workstation. Clicking this icon automatically installs the program in default configuration, i.e. typical installation is selected, all the recognition languages are installed on the workstation, and the interface language is selected based on the regional settings of the workstation.

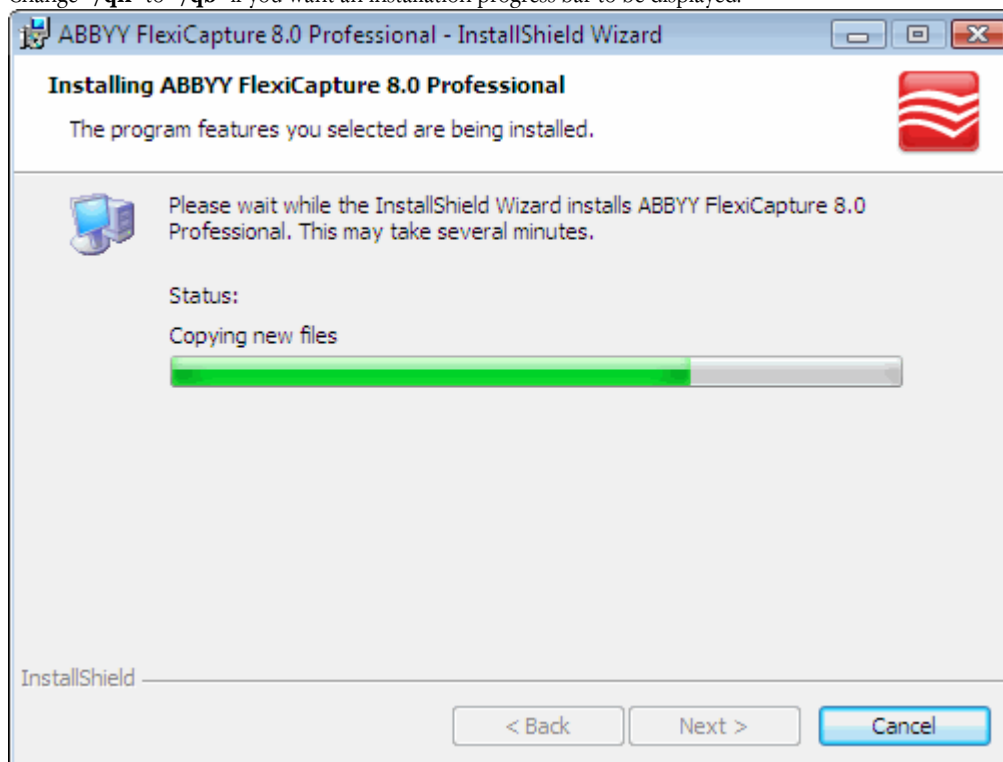
### Silent installation

For silent installation, type

**Setup.exe /qn**

In the case of silent installation, no set-up dialog boxes are displayed and the program is installed in default configuration, i.e. typical installation is selected, all the recognition languages are installed on the workstation, and the interface language is selected based on the regional settings of the workstation.

Change “/qn” to “/qb” if you want an installation progress bar to be displayed.



No other dialog boxes will be displayed.

### Additional command line options for silent installation

/L<language code> disables auto selection of the interface language and installs the program with the interface language you specified.

The following <language code> values are available \*:

1033	English
1034	Spanish
1038	Hungarian
1029	Czech
1031	German
1045	Polish
1049	Russian
1036	French
1046	Portuguese

\* – The total number of available languages depends on the type of your distribution package.

/V"<command line>" passes the specified command line directly to **msiexec.exe**. The <command line> string can be replaced with the following command:

INSTALLDIR="<destination>" – the path to the folder where ABBYY FlexiCapture 8.0 is to be installed.

Example:

**Setup.exe /qn /L1049 /v"INSTALLDIR="C:\ABBYY FlexiCapture 8.0""**

As a result, ABBYY FlexiCapture 8.0 will be installed into **C:\ABBYY FlexiCapture 8.0**, with the Russian interface and with all recognition languages.

(In the current version, you cannot select the recognition languages to be installed.)

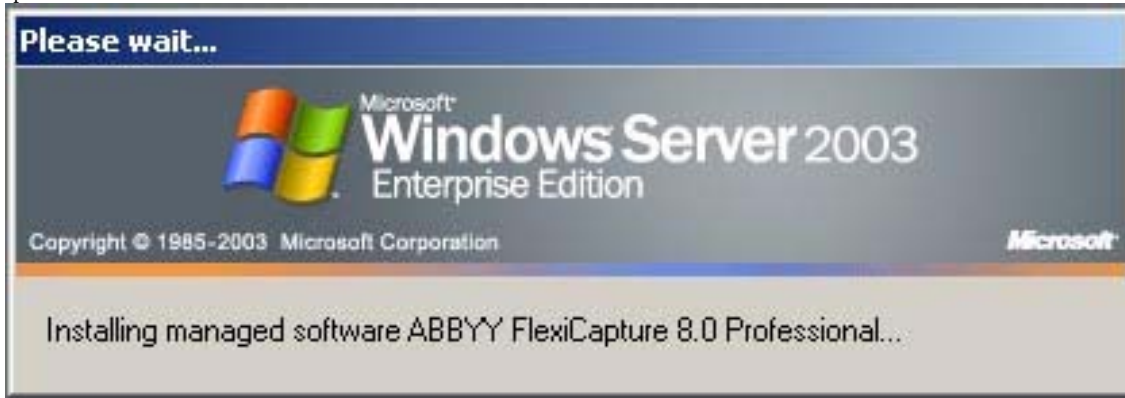
### **Removing ABBYY FlexiCapture in silent mode**

`msiexec /x {FD800000-0001-0000-0000-074957833700}`

# Installing the program using Active Directory

Microsoft® Windows® 2000 Server and Microsoft® Windows® 2003 Server include an integrated directory service, **Active Directory**, which in turn includes **Group Policy**. The Software Installation snap-in, which is part of Group Policy, allows you to install a software application on several workstations simultaneously.

Three major installation methods are implemented in **Active Directory**: Publish to User, Assign to User, and Assign to Computer. ABBYY FlexiCapture 8.0 can be installed using the **Assign to Computer** method. ABBYY FlexiCapture 8.0 will be installed on the specified workstation after the workstation is restarted.

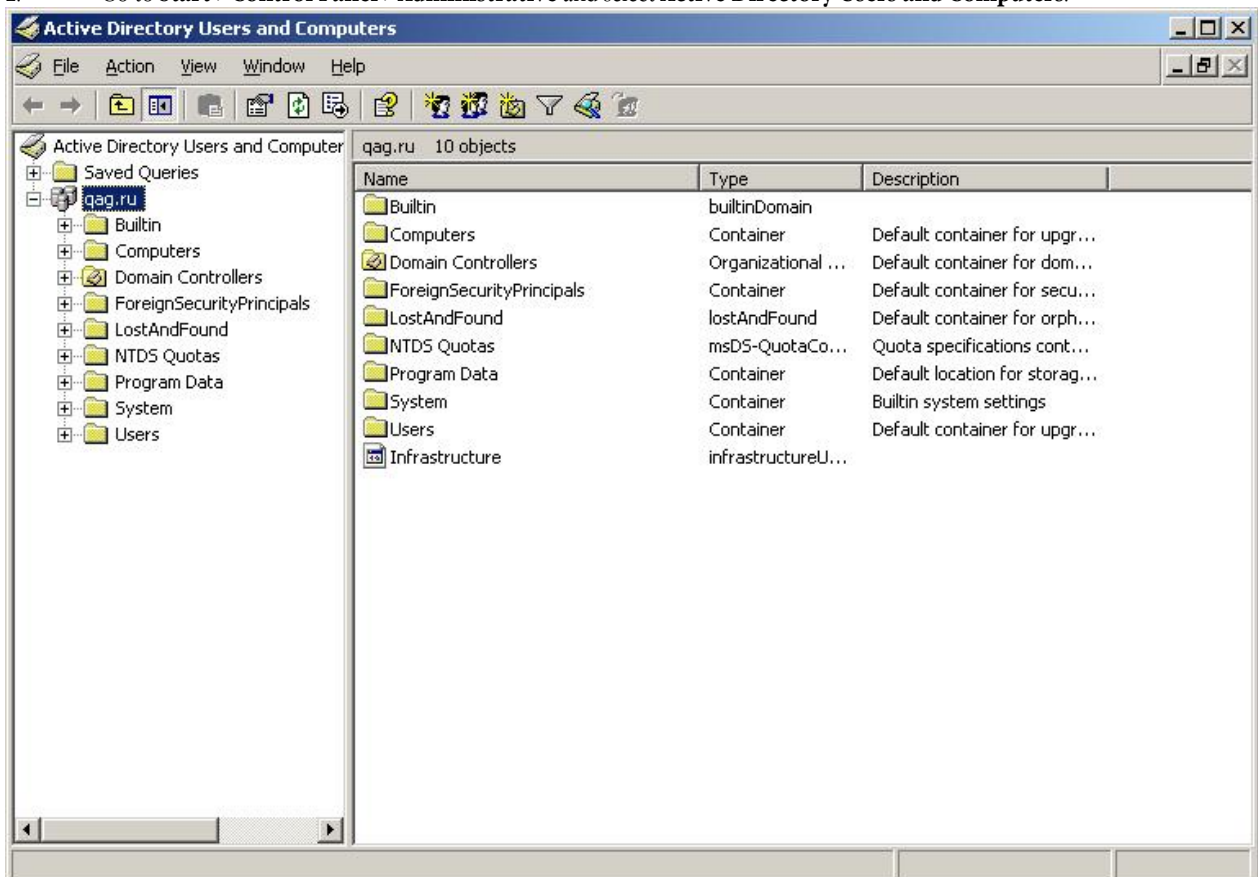


The **Publish to User** and **Assign to User** methods are not supported.

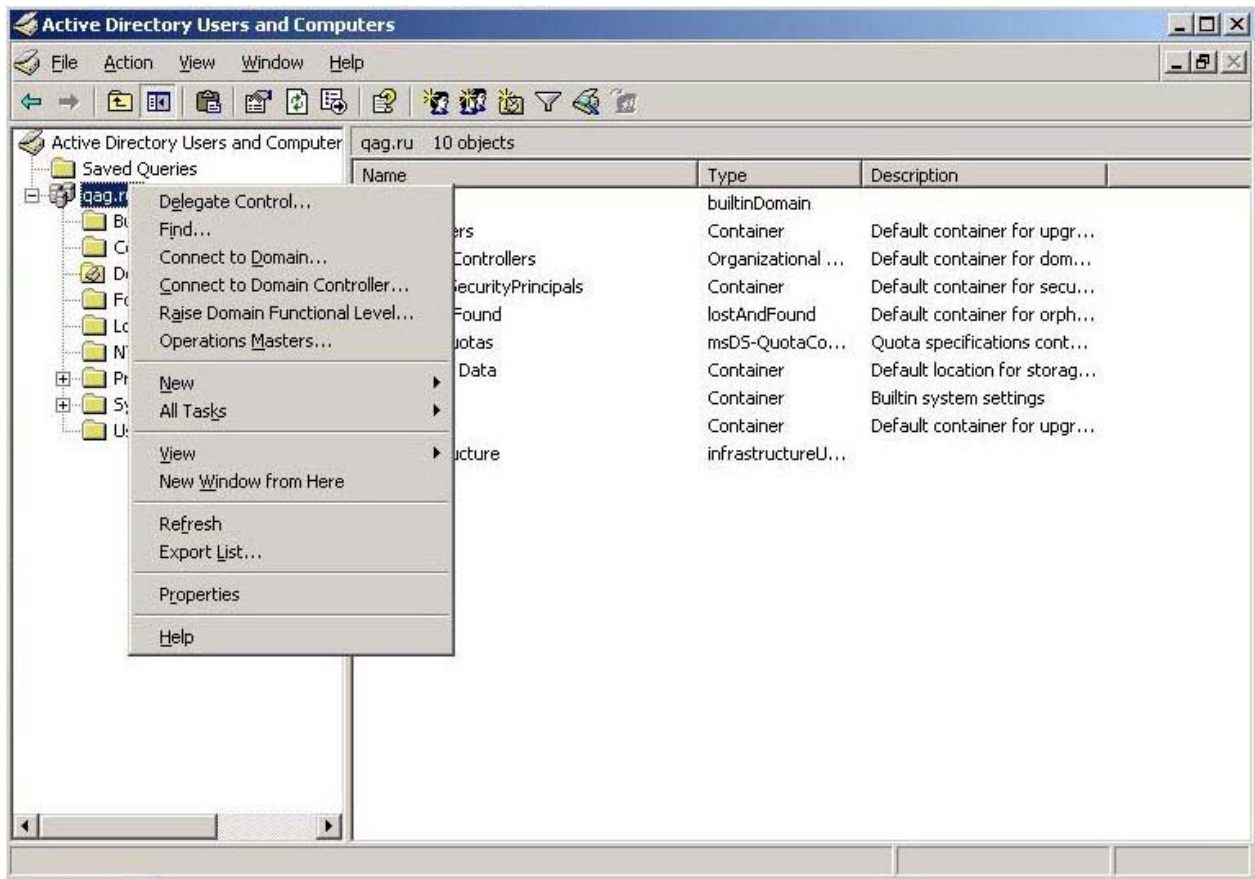
## Example: Deploying ABBYY FlexiCapture 8.0 using Active Directory

The program is installed on one domain computer or on a group of computers.

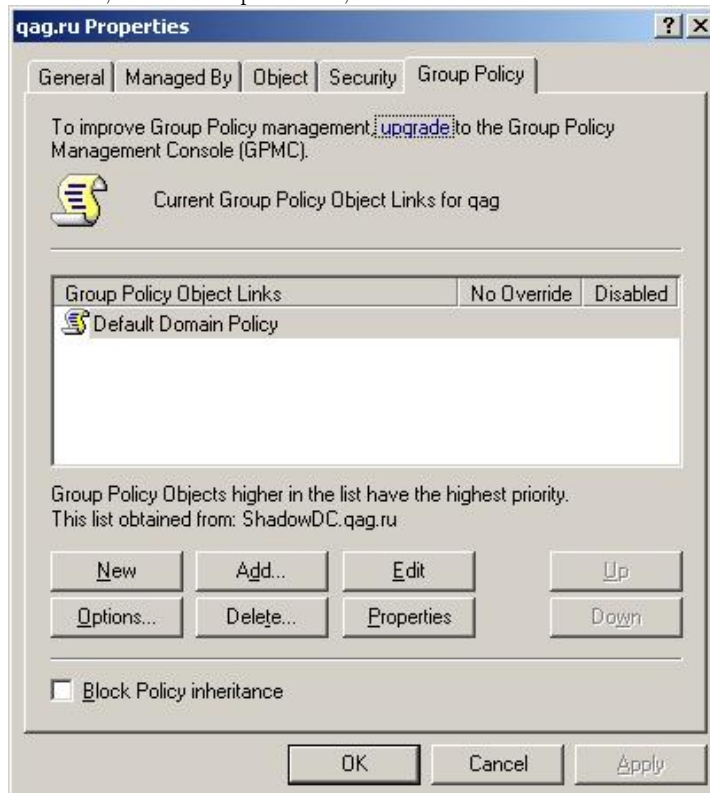
1. Create an administrative installation point (see Creating an administrative installation point).
2. Go to **Start >Control Panel >Administrative** and select **Active Directory Users and Computers**.



3. Right-click the site, domain, or another organized unit that contains the computer or group of computers onto which ABBYY FlexiCapture 8.0 is to be installed.
4. On the shortcut menu, select **Properties** and click the **Group Policy** tab.

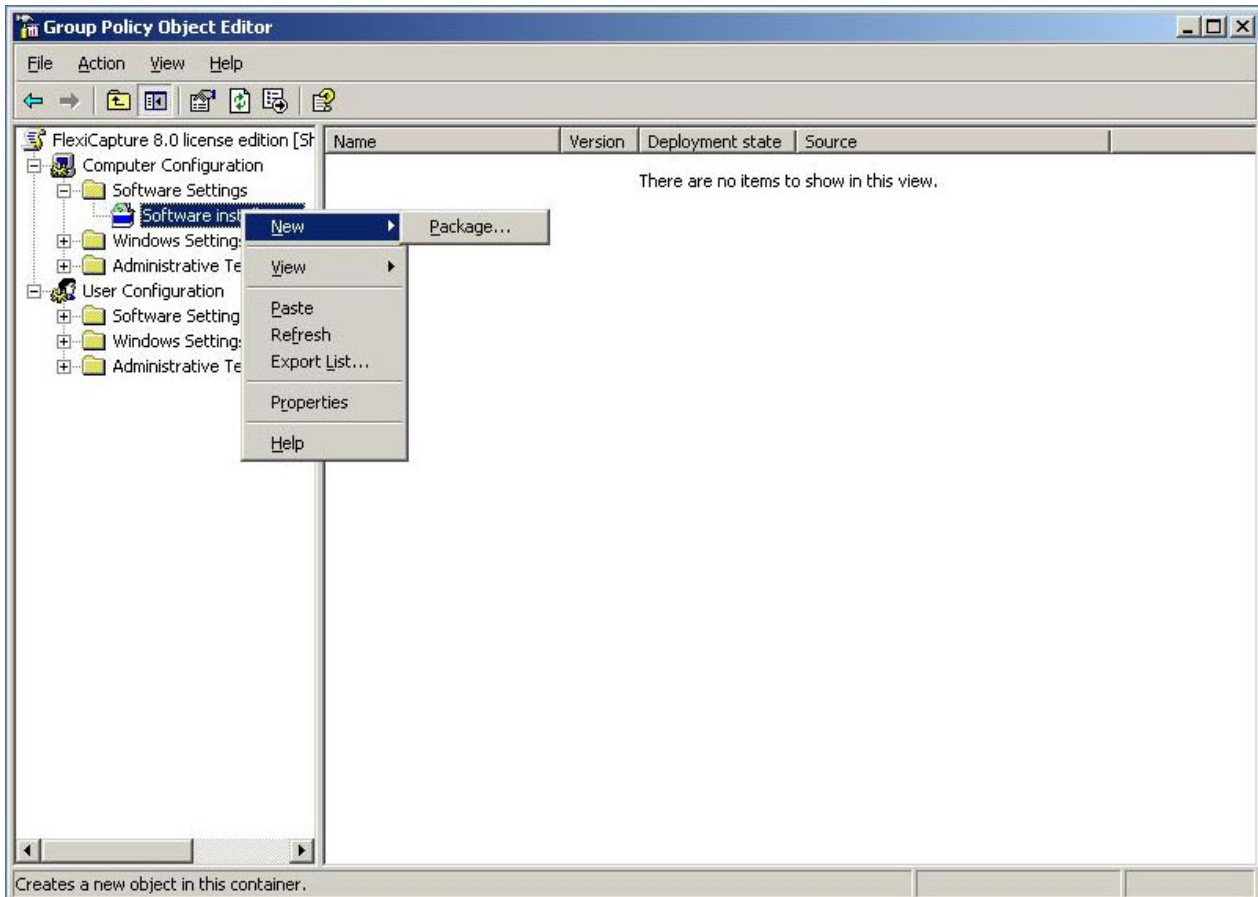


5. Right-click the organized unit that contains the group onto which ABBYY FlexiCapture 8.0 will be installed.
6. Click **New**, enter a descriptive name, and click **OK**.

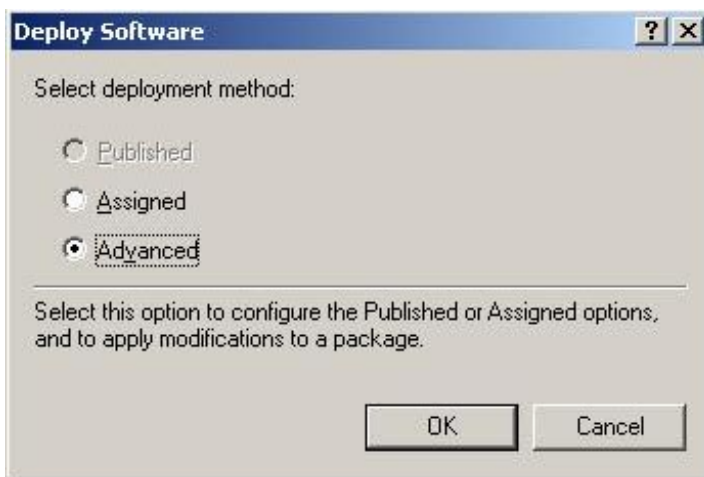


7. Right-click the Group Policy Object you have created and select **Edit...**
8. In the Group Policy window, right-click **Computer Configuration/Software Settings/Software Installation**.

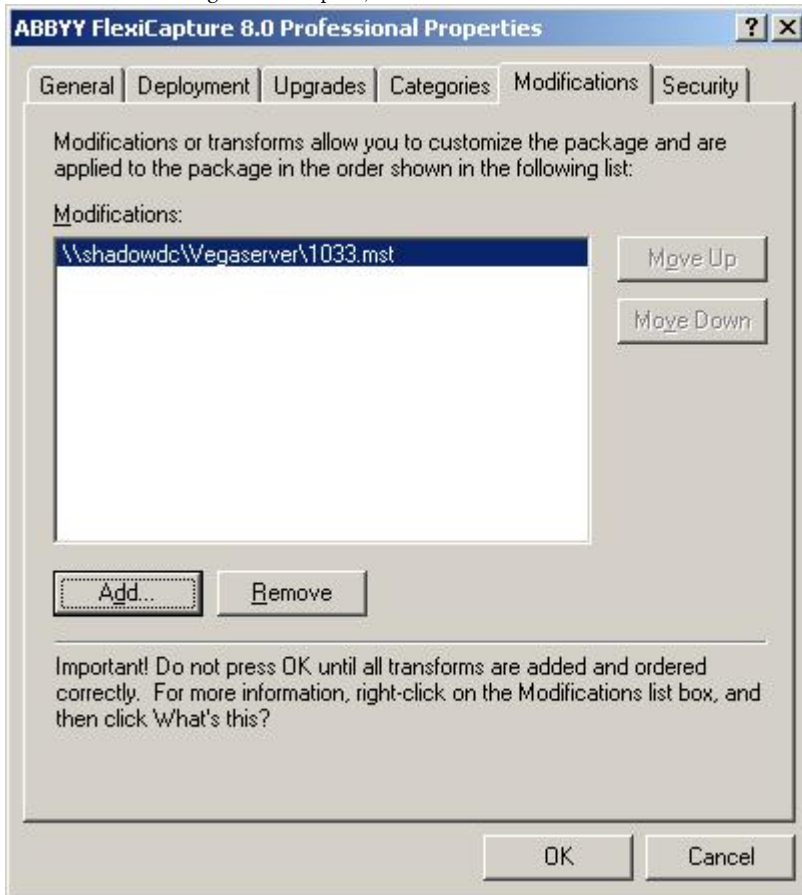
9. On the shortcut menu, select **New/Package**.



10. Provide the path to the file **ABBYY FlexiCapture 8.0 Professional.msi** that is located in the administrative installation folder on the server (see Creating an administrative installation folder).
11. Select the **Advanced** deployment method



12. In the dialog box that opens, click the **Modifications** tab and then click the **Add** button.



13. Select the interface language to be used in ABBYY FlexiCapture 8.0. The language files are located in the administrative installation folder on the server.  
The list of available files and their corresponding languages:

1033.mst	English
1034.mst	Spanish
1031.mst	German
1045.mst	Polish
1049.mst	Russian
1036.mst	French

For example, selecting the file **1049.mst** will install ABBYY FlexiCapture 8.0 with the Russian interface language.

# Installing the program using SMS

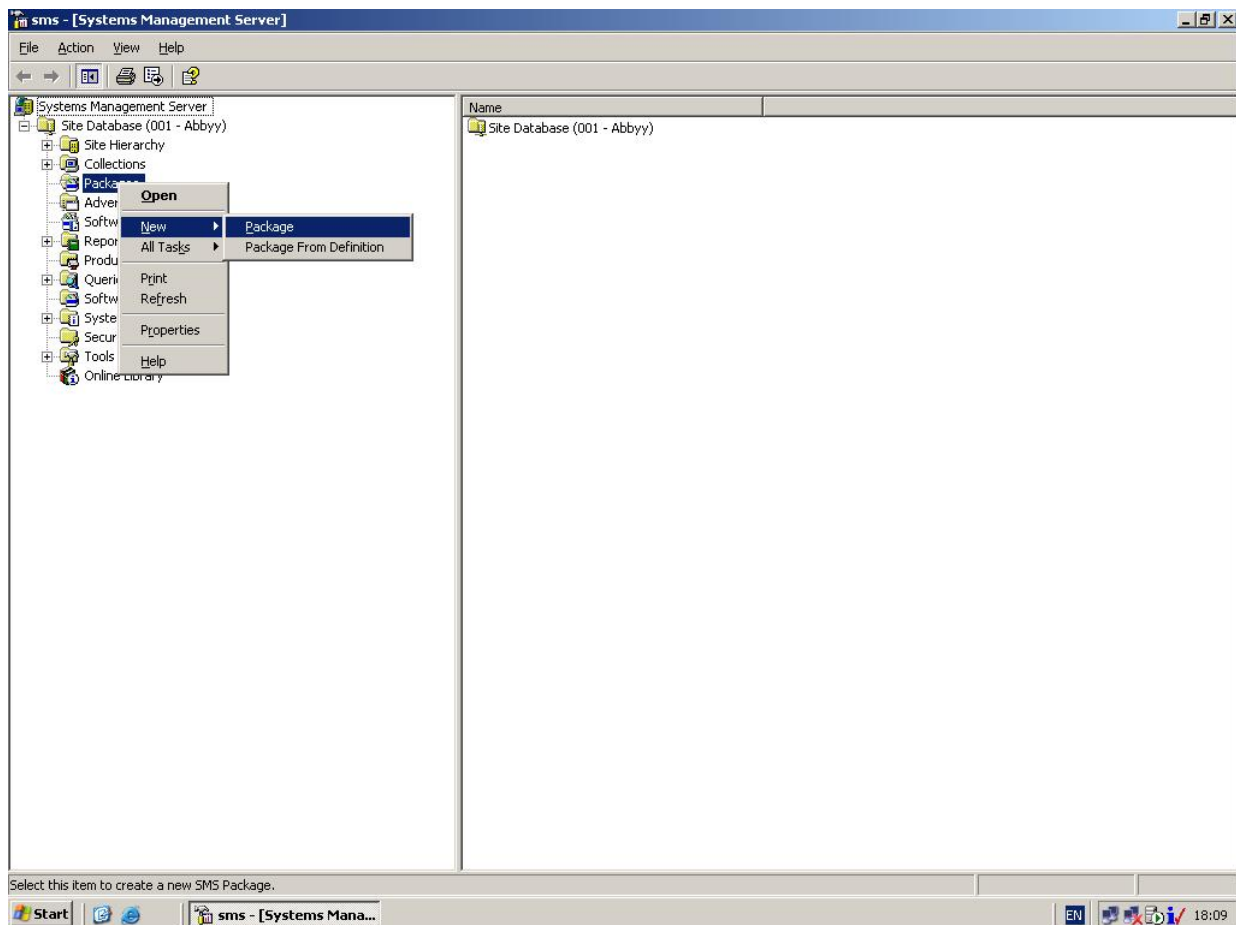
Microsoft Systems Management Server automates software deployment and eliminates the need to go directly to the locations where the software is to be installed (computers, groups, or servers).

SMS installation includes the following stages:

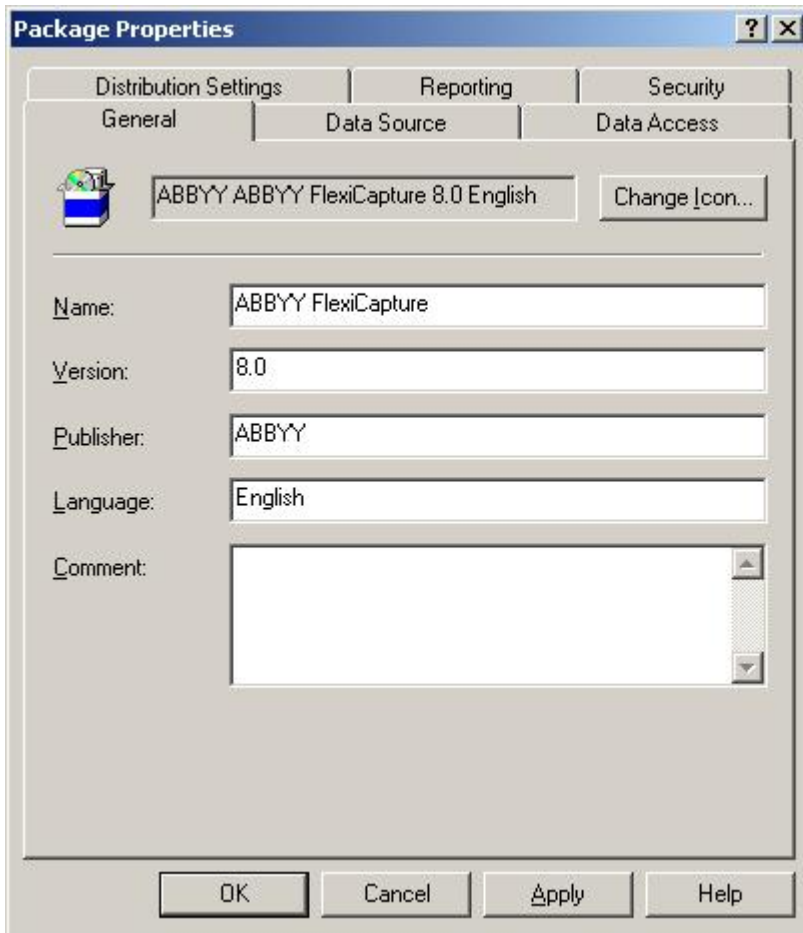
1. Creating an ABBYY FlexiCapture 8.0 deployment package.
2. Creating a deployment script (contains installation parameters: names of computers, time of installation, conditions for installation, etc.).
3. Deployment of the program on the workstations by SMS based on the script settings.

## Example: Deploying ABBYY FlexiCapture 8.0 using Microsoft SMS

1. Create an administrative installation point (see *Creating an administrative installation point*).
2. In the SMS Administrator console, select the Packages node.
3. In the **Action** menu, select **New/Package**.



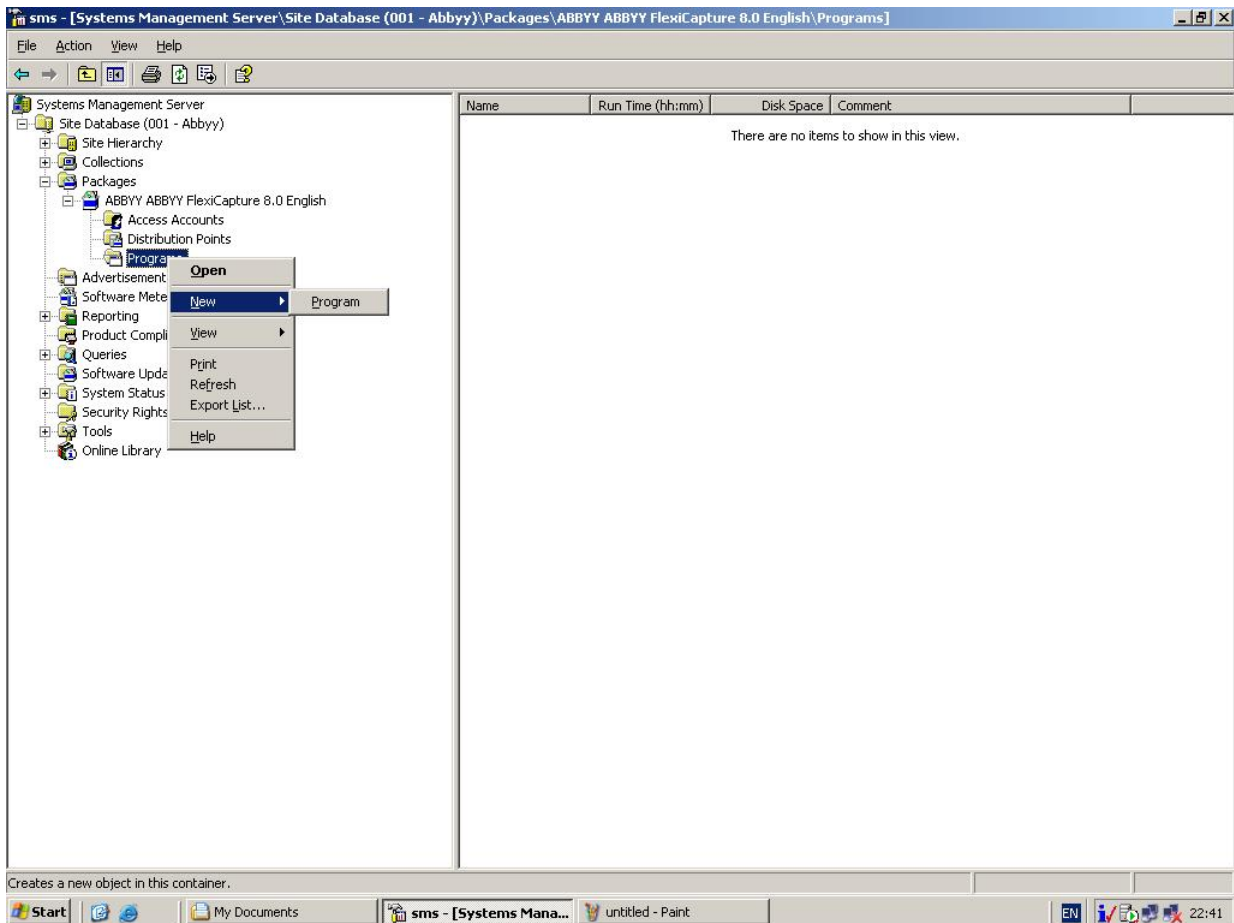
4. In the **Package Properties** dialog box, fill out the required fields.



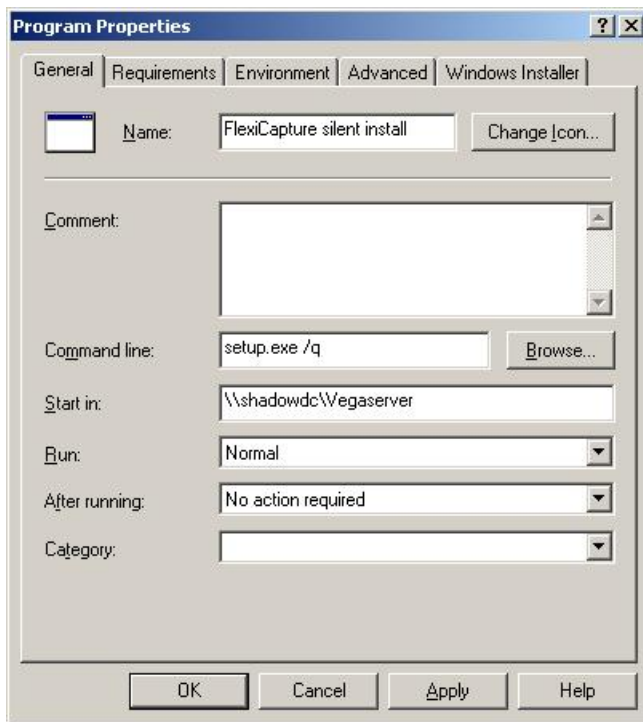
The screenshot shows the 'Package Properties' dialog box with the 'General' tab selected. The dialog has three main tabs: 'Distribution Settings', 'Reporting', and 'Security'. Under 'Distribution Settings', there are sub-tabs: 'General', 'Data Source', and 'Data Access'. The 'General' sub-tab is active. It contains a file icon, a text field with 'ABBYY ABBYY FlexiCapture 8.0 English', and a 'Change [con...]' button. Below these are five labeled text fields: 'Name:' (ABBYY FlexiCapture), 'Version:' (8.0), 'Publisher:' (ABBYY), 'Language:' (English), and 'Comment:' (empty). At the bottom are four buttons: 'OK', 'Cancel', 'Apply', and 'Help'.

5. Click the **Data Source** tab.
6. Make sure that **This package contains source files** is not selected and click **OK**.
7. Expand the node of the newly created package and select **Programs**.
8. In the **Action** menu, select **New/Program**.



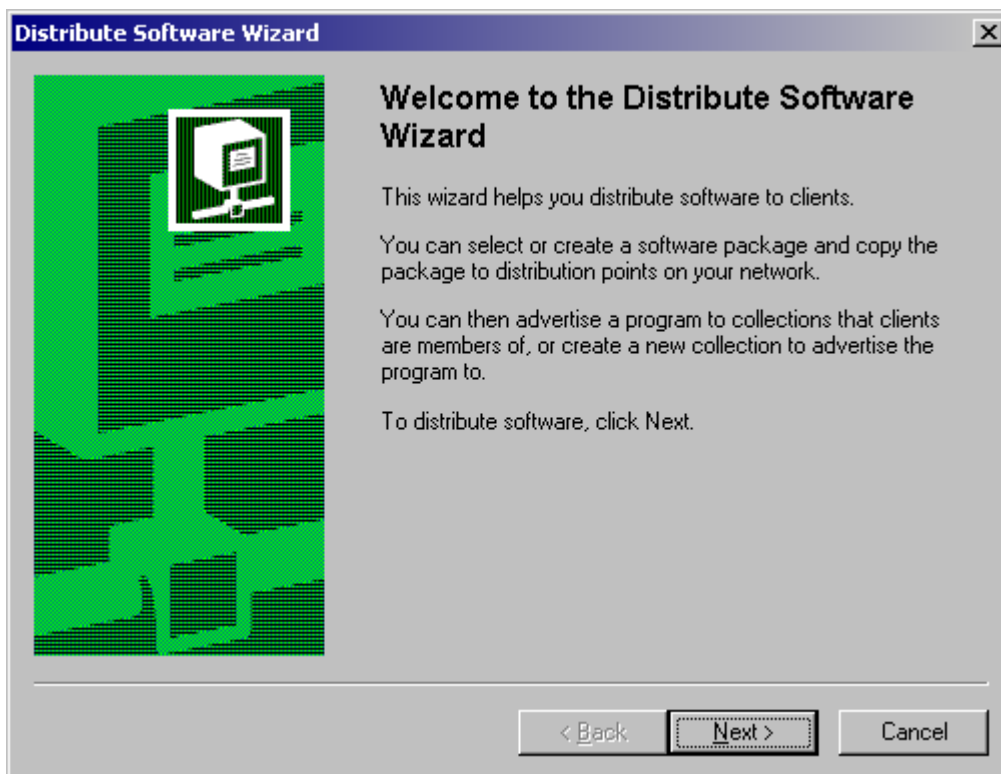


9. In the **Program Properties** dialog box, click the **General** tab.
  - In the **Name** field, type a descriptive name of the program
  - In the Command Line field, type `setup.exe /q`
  - In the **Start in** field, provide the network path to the ABBYY FlexiCapture administrative installation folder (e.g. `\\MyFileServer\Programs Distribs\ABBYY FlexiCapture 8.0`)
10. In the **Program Properties** dialog box, click the **Environment** tab.
  - Clear the **User input required** option
  - Select the **Runs with administrative rights** option
  - Make sure that the **Run with UNC name** option is selected



11. Adjust the running parameters if required and click **OK**.

12. You can also use the **Distribute Software Wizard**. In the **Action** menu of the package, select **Distributive Software** and follow the instructions of the wizard.



**Important!** You cannot create Distribution Points.

# Managing licenses

## General

**ABBYY FlexiCapture 8.0 License Manager** is a license management utility. It is installed on the license administrator station when an administrative installation point is created (see *Creating an administrative installation*).

The License Manager allows you to:

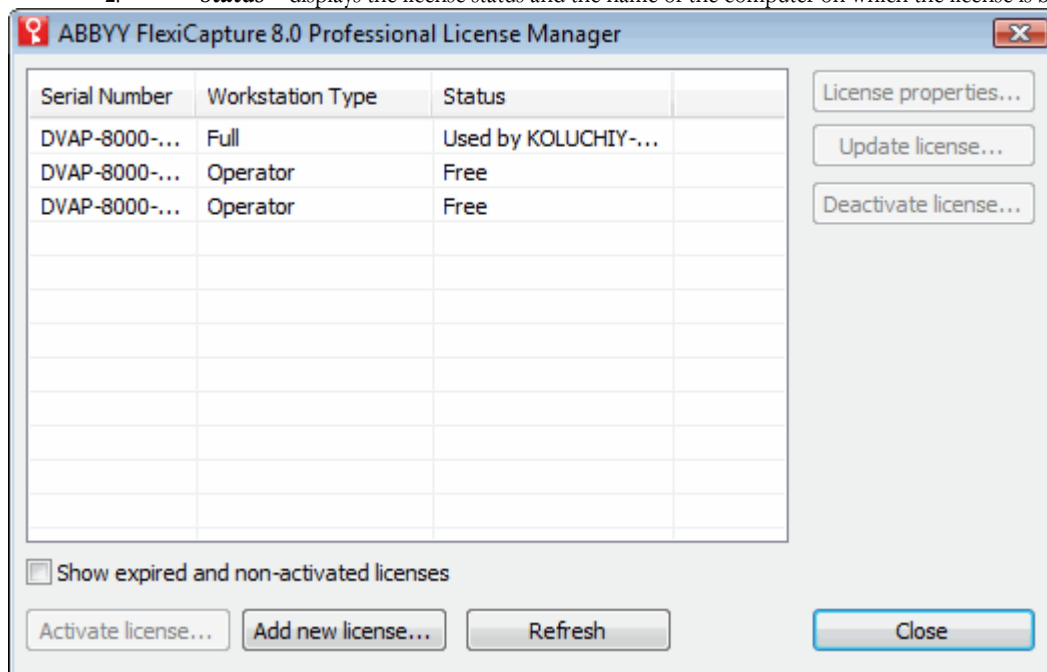
- add new licenses
- activate licenses
- view license parameters

To activate hardware licenses, ABBYY FlexiCapture 8.0 Dongle Update must be used. The process of activating hardware licenses is identical to activating software licenses.

## ABBYY FlexiCapture 8.0 License Manager

The **License Manager** main window contains the following columns:

1. **Serial Number** – displays the license number and the index that corresponds to the given number in the license pack
2. **Status** – displays the license status and the name of the computer on which the license is being used



## License types

Licenses can be of two types: **Full** and **Operator**.

1. **Full license**  
Allows running **Administrator Stations** and **Operator Stations**.
2. **Operator license**  
Allows running only an **Operator Station**.

**Note:** You can run **ABBYY FlexiLayout Studio 8.0** and **ABBYY FormDesigner 8.0** if your license includes the corresponding option.

## License statuses

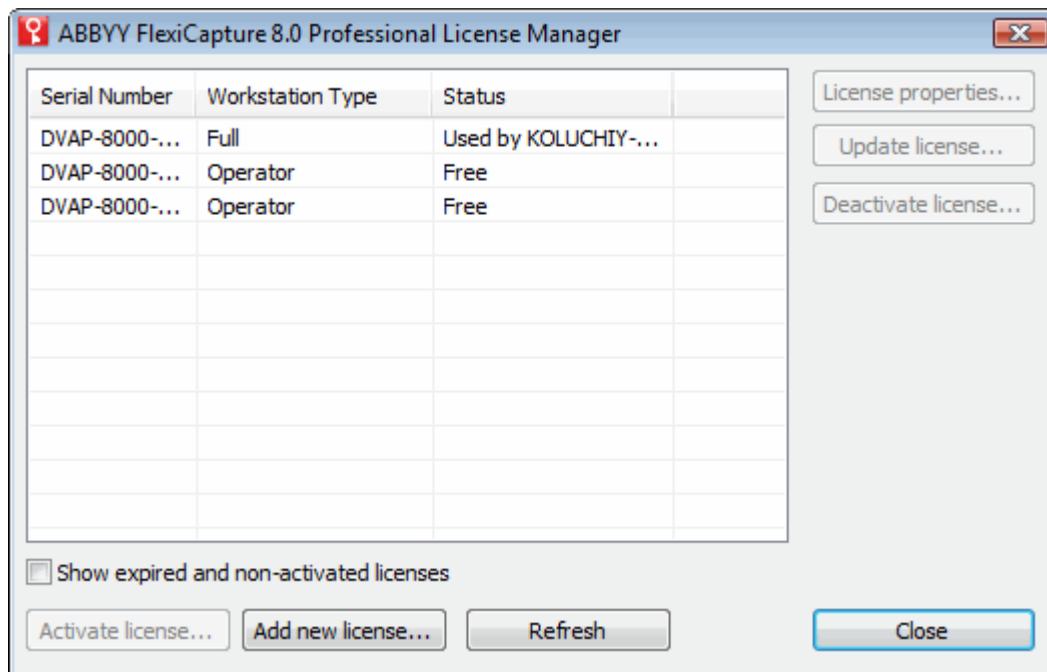
### License statuses

- **Not activated** (you need to activate the license to be able to use it)
- **Free** (the license is not currently in use)
- **Used** (the license is in use on a workstation)

## License properties

Property	Description
Serial number	Unique license number.
Path to activation file	The storage location of the activation file.
License type	Full or Operator.

## Buttons in the main window



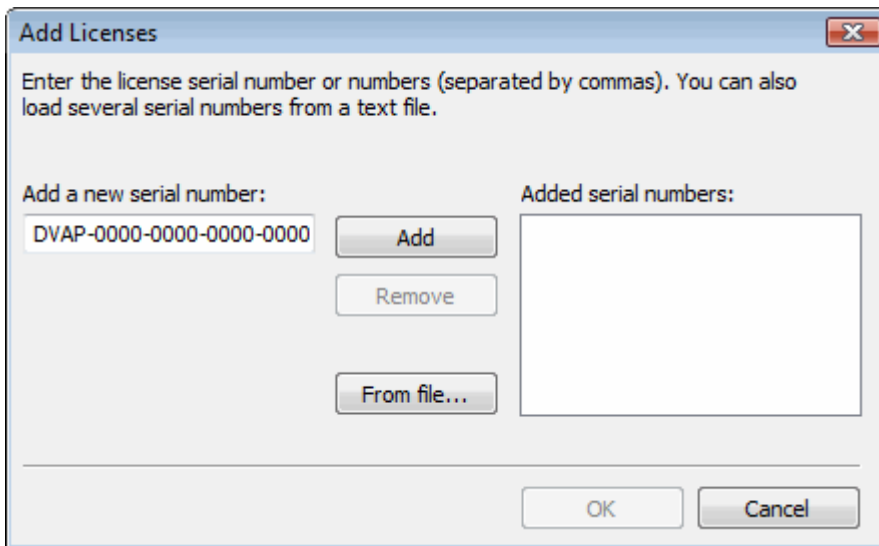
1. **Activate license...**  
Launches the ABBYY FlexiCapture Activation Wizard.
2. **Add new license...**  
Opens a dialog box where you must enter your license number(s) manually or from a \*.txt file.
3. **Refresh**  
Refreshes the information about the licenses currently available on the license server.
4. **License properties...**  
Opens a dialog box where you can view the parameters of your licenses.
5. **Update license...**  
Loads new properties for an activated license.
6. **Deactivate license...**  
Deactivates a license. If the selected license has not been activated, the button caption changes to **Delete license**. Clicking this button will delete the selected non-activated license.

## Activating a license

ABBYY takes steps to protect its intellectual property from piracy. Software piracy is harmful both to manufacturers and to end users alike. Unlike legally purchased software products, pirated software is never safe and secure.

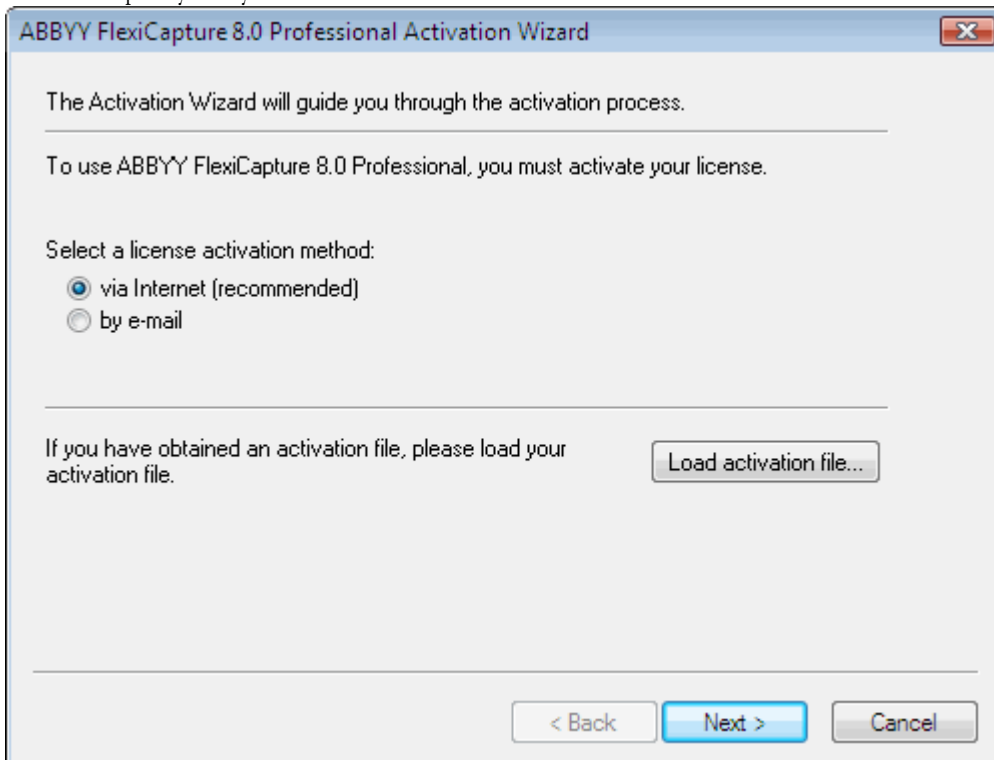
If your end-user license agreement allows you to install and use the product only on one computer, installing it on several computers will breach the agreement and violate the copyright laws of the Russian Federation. The activation technology restricts the number of software copies that can be used simultaneously and thus prevents the installation of one licensed copy on an unlimited number of computers. At the same time, one licensed copy may be installed and activated on one and the same computer any number of times without any restrictions.

You will not be able to use the software product unless you activate it.



## How activation is carried out

The activation process takes very little time and is carried out via an **activation wizard**. The activation wizard helps you to send the data required for activation to ABBYY. These activation data are sent to ABBYY in the form of a code (Installation ID) which is generated based on the hardware on which the product is installed. **No personal data are used** to generate the code and the user remains completely anonymous.



Available activation methods:

- over the Internet

Activation is carried out automatically and takes several seconds to complete. This method requires an active Internet connection.

- by e-mail

An e-mail message is generated that contains the data required for activation. Please do not alter the body or the subject of the message to ensure a prompt reply from the mail robot.

In the case of activation by e-mail, you will receive an activation file from ABBYY. Save this file to the hard disk and provide the path to this file in the corresponding field of the activation wizard. After the activation is complete, you can use ABBYY FlexiCapture 8.0 on the server on which it has been activated.

You can re-**install ABBYY FlexiCapture 8.0** as many times as you need without additional activations, provided you do not move or delete the license database. If you move or delete the license database, an additional activation will be needed.

**Note:**

1. ABBYY FlexiCapture copies that are installed on workstations are activated automatically from the server and do not have to be activated separately.
2. If changes are made to the server that hosts the license database, you will have to install and activate the program again (i.e. create an administrative installation and deploy the program on the workstations).
3. If there are no free activated licenses available on the server and a user tries to run the program on their workstation, the program will not run and a warning message will be displayed.
4. Hardware licenses can only be activated over the Internet.

# Group work in a LAN

ABBYY FlexiCapture 8.0 Professional supports group work in a local area network. A copy of ABBYY FlexiCapture must be installed on each workstation. The following group work features are available:

1. **Working on the same project on several workstations**  
This mode increases productivity and allows tracking the data capture actions. For each page, the following information is available: on which computer and by which user it is currently opened, by whom it was scanned, recognized, verified, etc. Any changes made to a page by one user become visible to all the users working with the same batch.
2. If one license server is used (see **Network installation**), the values of the RPCSecurityLevel parameter in the %installdir%\FlexiCapture.ini file must be the same on the license server and on the workstations. If this parameter is set to **Enable**, only the user authenticated on the license server computer will be able to access the license server. If this parameter is set to **None**, all the users of the domain or workgroup will be able to access the license server. If you change the network name or the IP address of the license server, you must accordingly change the value of the ServerName parameter in the %installdir%\FlexiCapture.ini file on the workstations.

Example:

```
[Protection]
RPCSecurityLevel=None
ProtectionType=Server
ServerName=GERASIM
```

## Working on the same project on several workstations

1. Create a new project or open an existing project and set the desired scanning and recognition parameters. All the users that will work with this project must have read and write access to the project folder. Make the project folder accessible over the LAN, launch ABBYY FlexiCapture, and open the project on all the workstations on which it is to be processed.  
**Tip:** In the case of group work, it is recommended that each operator works with a separate working batch.
2. Start background recognition on the workstations dedicated to recognition (**Tools>Options>Document Processing>Recognize added images automatically**).
3. Start the scanning process on the computer equipped with a scanner and automatic document feeder.  
**Tip:** If your scanner is not TWAIN-compatible, you can scan documents directly to the hot folder created for the batch. In this case, you must set up import from this hot folder as described in Help\Program settings\Image import profiles.
4. Each operator can assemble documents, verify data, apply rules, and export the data and documents from their batch.

## Technical support

Should you have any questions regarding the installation and use of ABBYY FlexiCapture 8.0, please contact the ABBYY technical support service or the technical support service of the ABBYY partner from which you obtained the software. For contact details, see the **Technical Support** section of the ABBYY website at [www.abbey.com](http://www.abbey.com).